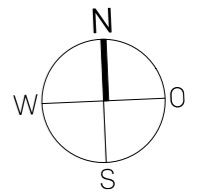




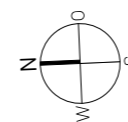
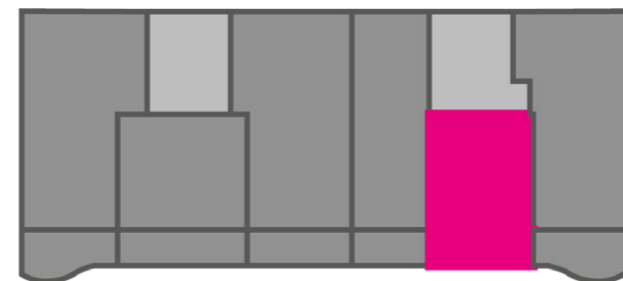
Unverbindliche Visualisierung



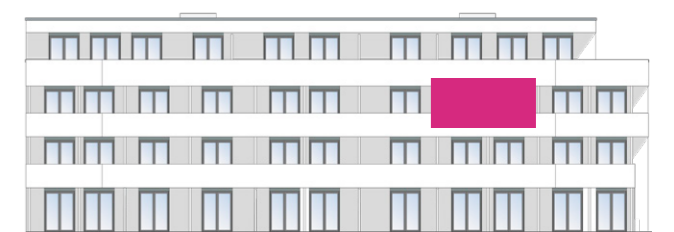
Maßstab 1:50



Wohnen/Essen/Küche	23,36 m ²
Bad	6,06 m ²
Balkon (50%)	5,13 m ²
DIN-Wohnfläche ges. (inkl. 1% Putzabzug)	34,55 m ²



Haus C30



Ansicht West

Sindelfingen-Maichingen
Haus C30

2. Obergeschoss