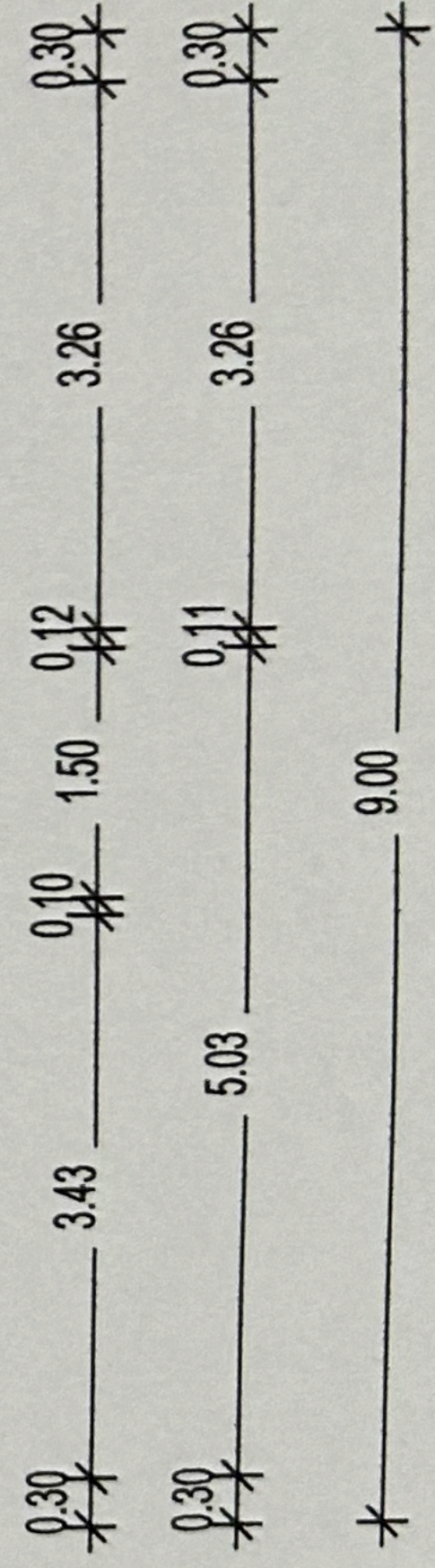
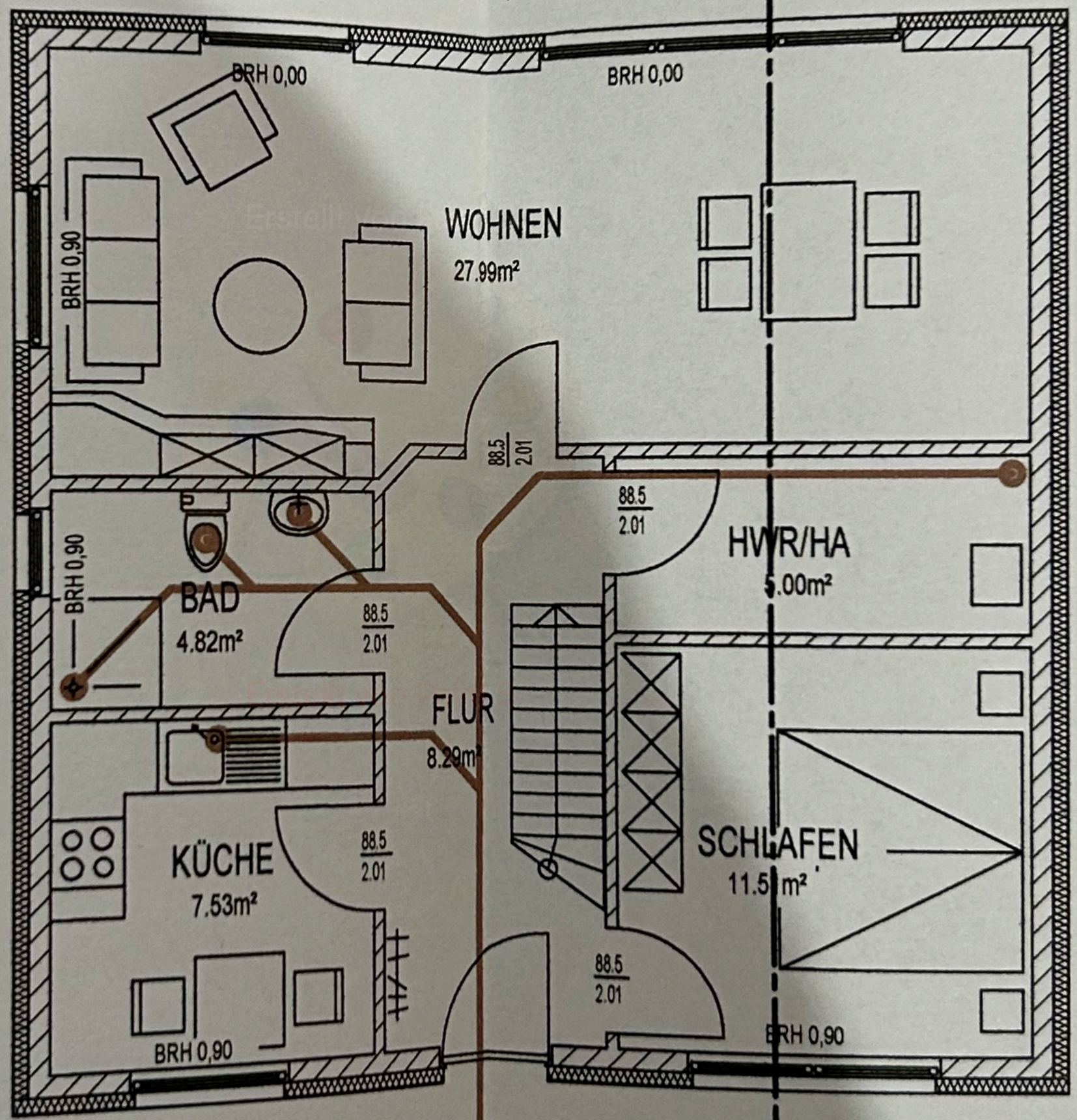
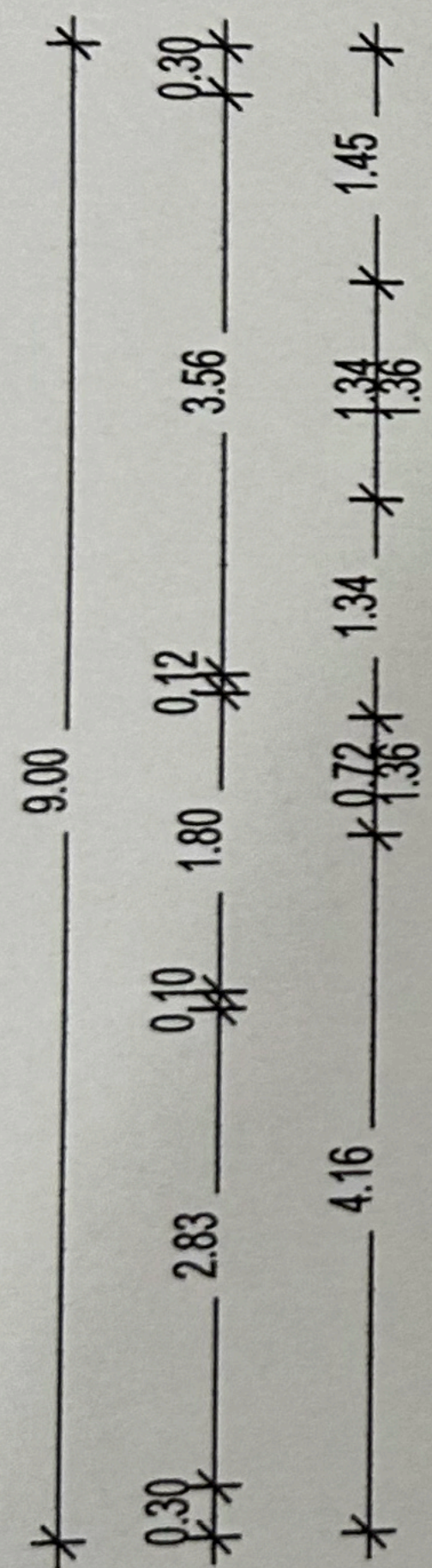
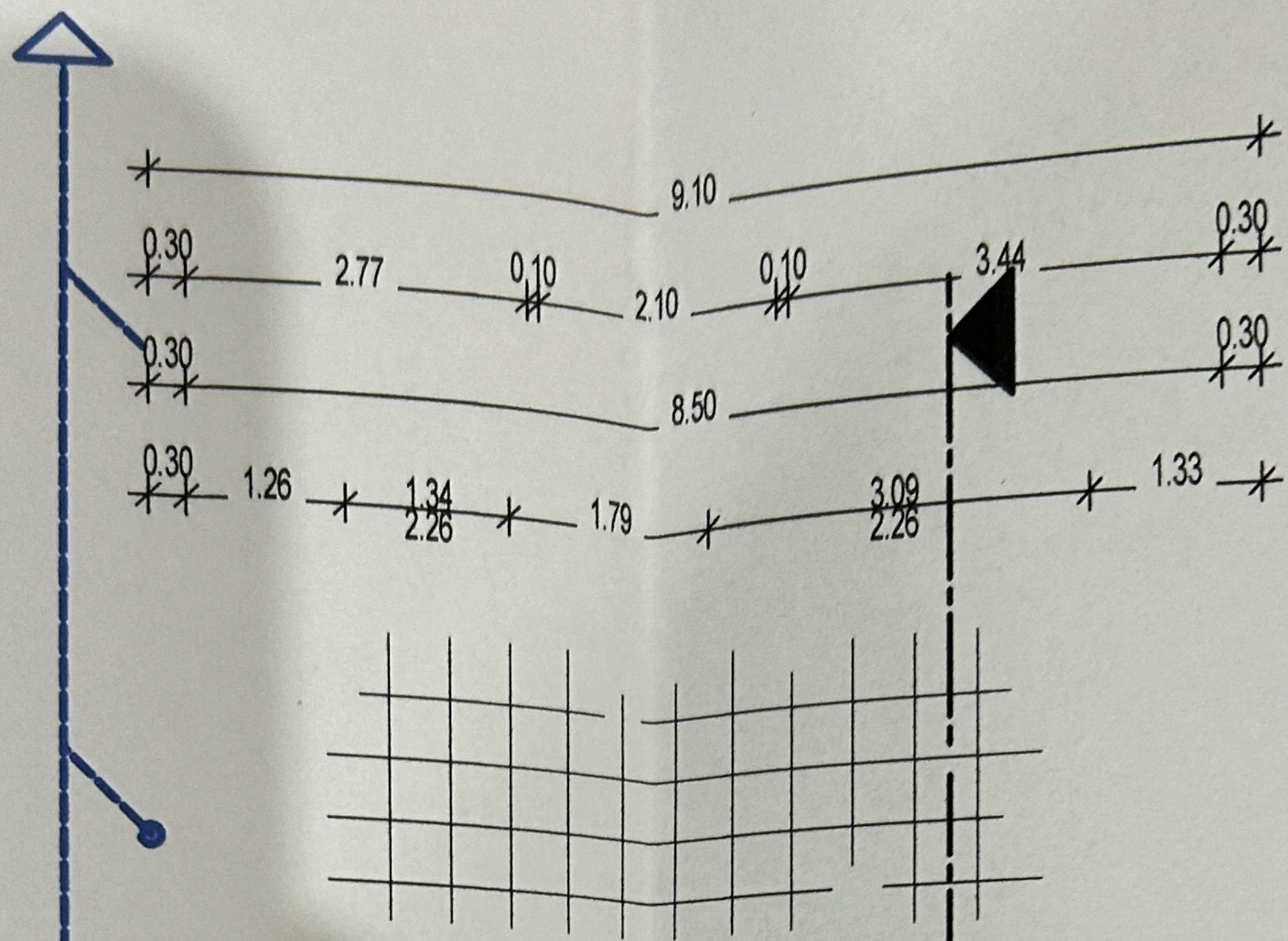


REGENWASSER:
VERSICKERUNG AUF
DEM GRUNDSTÜCK.



HAUS 1
65.14m²

SCHMUTZWASSER:
ANSCHLUSS AN
ÖFFENTLICHES SYSTEM.

GRUNDRISS ERDGESCHOSS

ENTWÄSSERUNG

