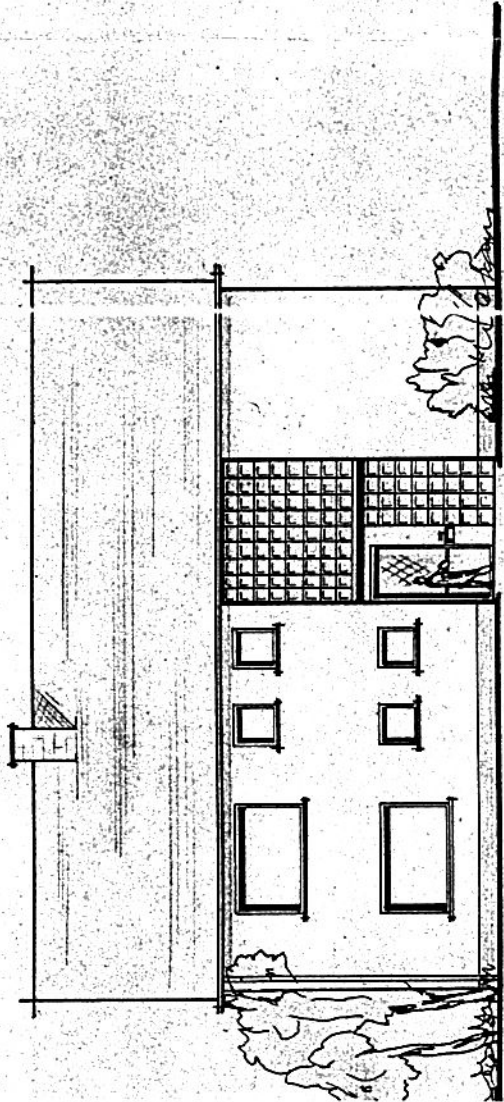
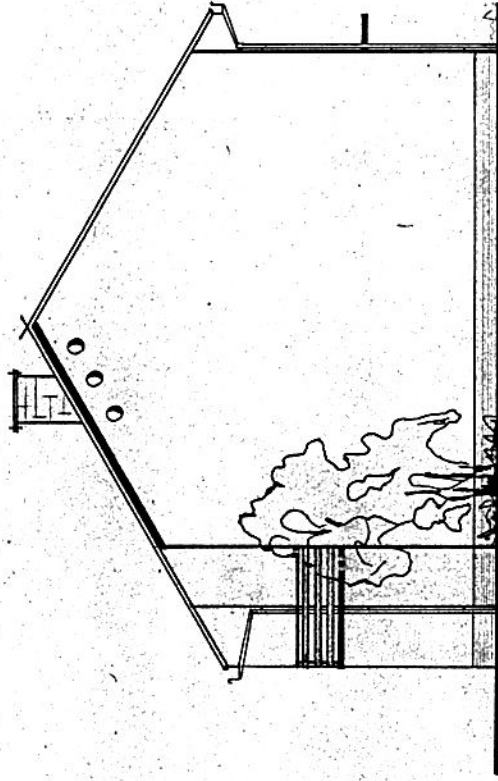


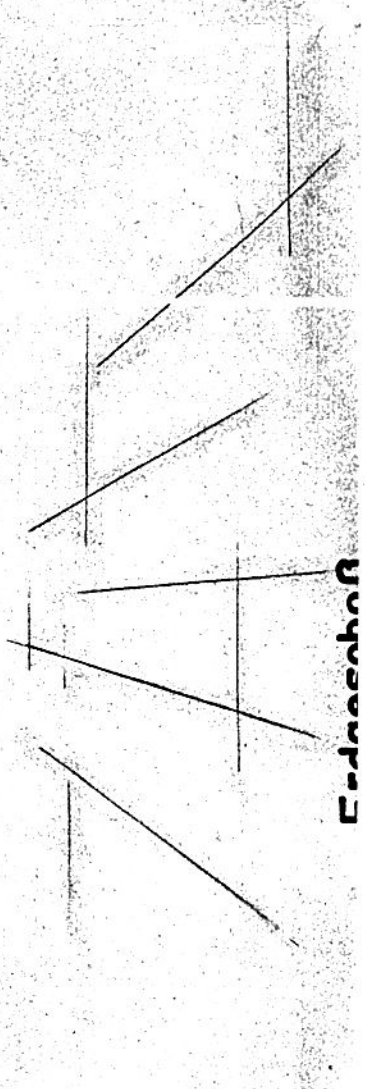
Nordansicht



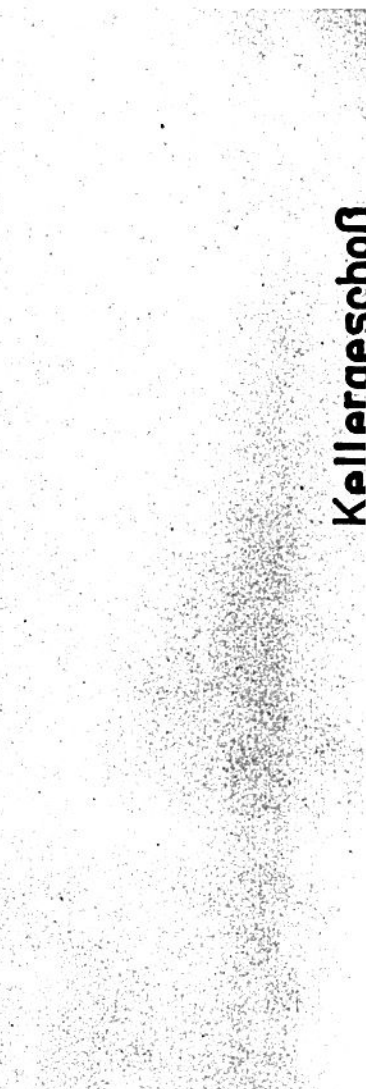
Ostansicht



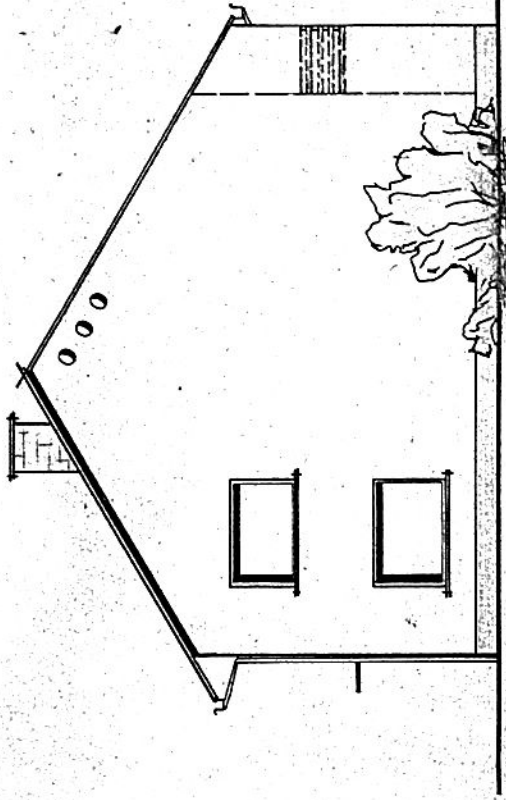
Erdschoß



Kellerschoß

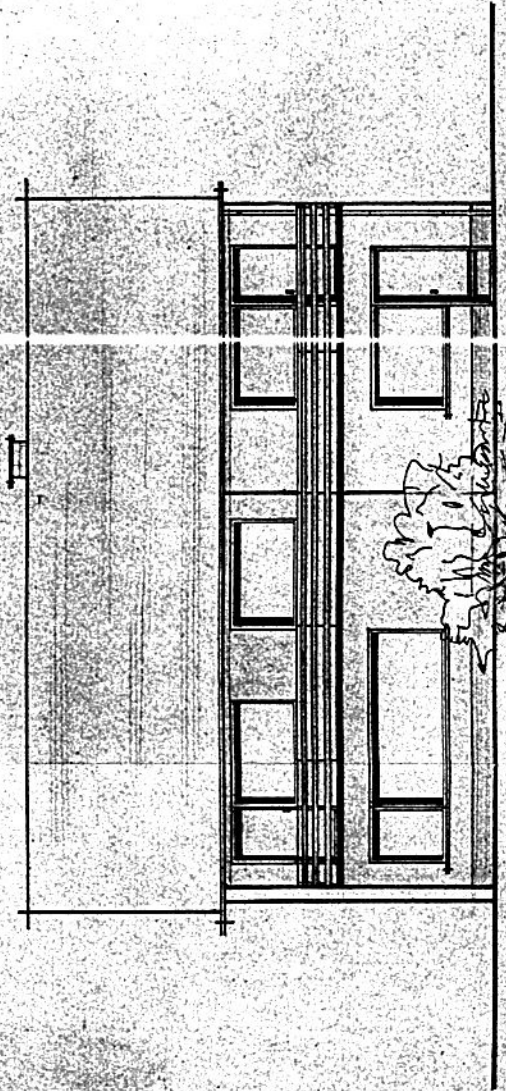


Westansicht



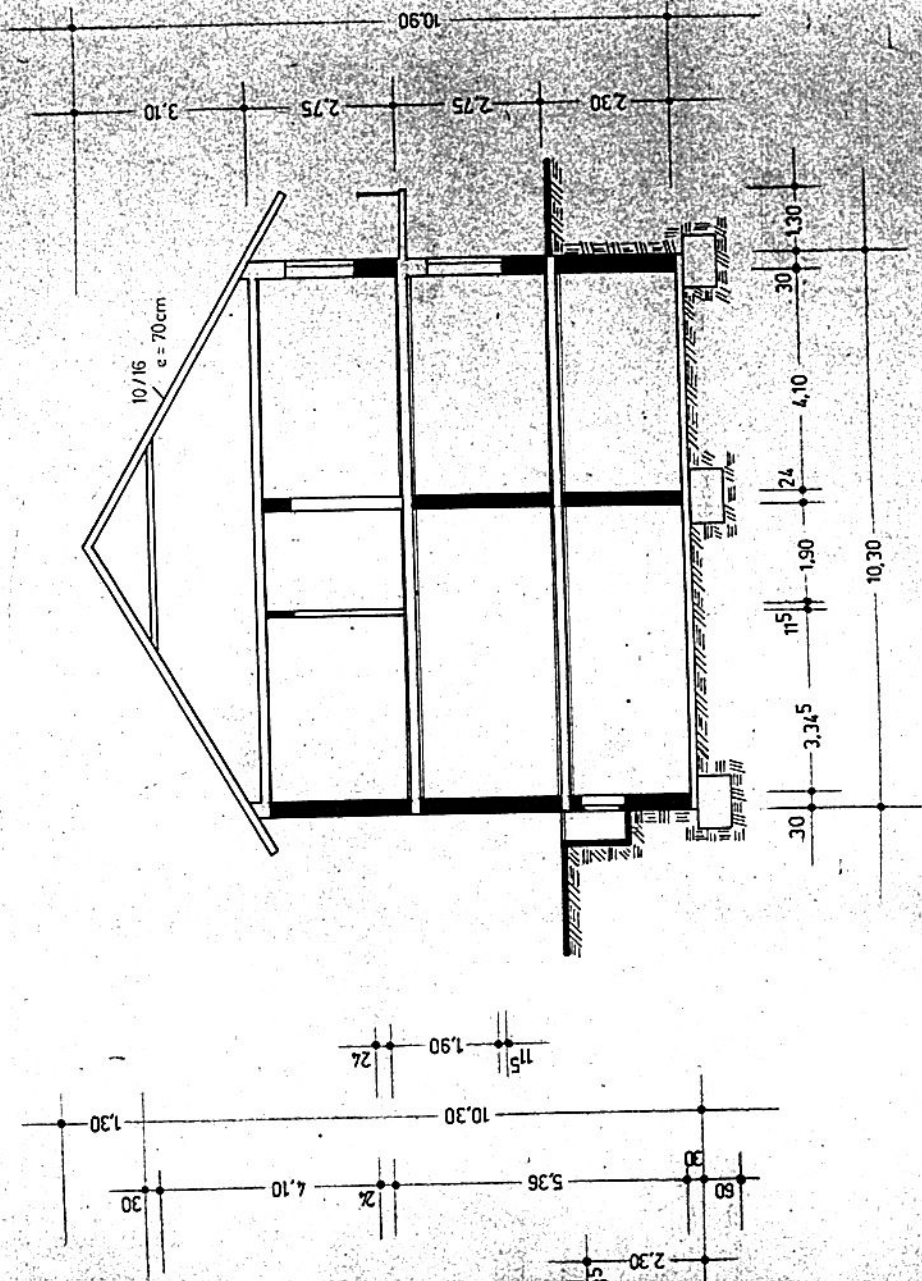
Schnitt

Südsansicht



Obergeschoss

Schnitt



Errichtung eines Wohnhauses für
Herrn Hans Strauß, Hofffurt
Hohe-Wart-Straße
— M = 1:100 —

Die Nachbarn:

Der Bauherr:

Die Stadt:

Hofffurt im März 1970

Der Planentwerfer:

FRANZ ZANNER
BAUINGENIEUR
1750 BASSERSTRAÙE
1070 WIEN VIENNA