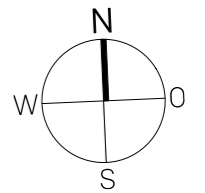




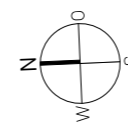
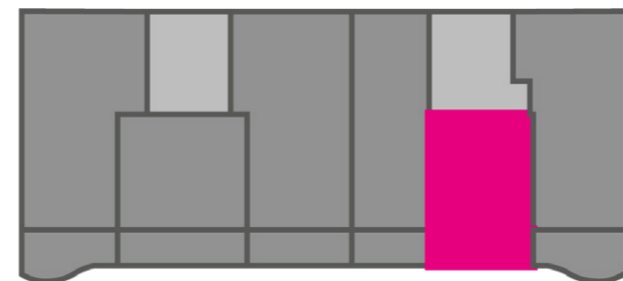
Unverbindliche Visualisierung



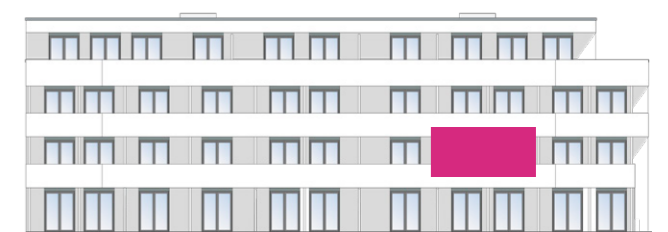
Maßstab 1:50



Wohnen/Essen/Küche	23,36 m <sup>2</sup>
Bad	6,06 m <sup>2</sup>
Balkon (50%)	5,10 m <sup>2</sup>
DIN-Wohnfläche ges. (inkl. 1% Putzabzug)	34,52 m <sup>2</sup>



Haus C27



Ansicht West

Sindelfingen-Maichingen  
Haus C27

1. Obergeschoss